

The logo for Antari FOG MACHINE. The word "Antari" is written in a bold, red, sans-serif font with a registered trademark symbol (®) to its upper right. Above the letter 'i' in "Antari" are three horizontal lines of varying lengths, suggesting motion or sound. Below "Antari" is a red rectangular bar containing the words "FOG MACHINE" in white, uppercase, sans-serif font.

Antari[®]
FOG MACHINE

PRODUCT GUIDE

NEW PRODUCTS

SNOW

01



S-600

FAZE

02



F-2

SCENT

03



SCN-600

CO2

04



CH-1

FOG MACHINE

FOGGER

05



W-5300 | W-5150

06



W-510 | W-508

07



M-11

08



M-10 | M-5

09



M-8

10



Z-3000II | Z-1500II

11



Z-1200II | Z-1000II

12



Z-800II

FOG JET

13



M-9

14



M-7X

15



Z-1520 | W-715

16



M-4 | Z-1020

WEATHERPROOFED

17



IP-1000 | IP-1500

BATTERY POWERED

18



MB-1

19



MB-20X

PUMPLESS OFF-MAINS
CAPABLE FOG MACHINE

20



MB-55

SMAZE

21



F-7

FAZER

22



F-4

23



F-1

24



Z-390 | Z-350

HAZER

25



HZ-1000

26



HZ-500 | HZ-400

27



HZ-350 | HZ-100

LOW FOG

28



DNG-250 | DNG-200

29



DNG-100 | ICE-101

SPECIAL EFFECTS

SNOW & FOAM

31

S-500



32

SW-300



33

SW-250



34

S-200X | S-100X



35

S-120



BUBBLE

36

B-200



37

B-100 | W-101



38

AF-5X



39

AF-4 | AF-3



FIRE TRAINING

41

FT-200



42

FT-100



43

FT-50



44

FT-20X



ACCESSORIES | FLUID

46

LCU-1S | LCU-2S



47

CONTROL MODULE

49

REMOTE

55

HANGING BRACKET SETS

56

ADAPTOR

57

FLIGHT CASE

58

FLUID

DarkFX

65

Dark FX UV Paint



67

DARKFX STRIP 1020



68

DARKFX WASH 2000 IP



69

DARKFX WASH 2000



70

DARKFX SPOT 670



71

DARKFX STRIP 510



72

DARKFX STRIP 510 IP



73

DARKFX SPOT 510 IP



74

DARKFX SPOT 1750



75

DARKFX DRIVE 4 MKII



75

DARKFX DRIVE 4




76

ANTARI WATCH

78

SPEC CHART



All of our effects are inspired by **Mother Nature.**
All of our machines are **Designed to Respect her.**



COMPANY PROFILE

Since 1984, Antari has been a leading global manufacturer, specializing in atmospheric special effects, like fog, haze, and snow for a wide range of international live and broadcast venues, festivals, corporate events, theatre, concerts, clubs, theme parks, archtainment, and houses of worship. Antari has always pursued the perfect fog, with some of the most stringent quality control standards in the entertainment production industry.

Antari's R&D expertise, including an in-house team of engineers and designers, along with modern production facilities, and strict attention to detail, allows Antari to continually create new and exciting cutting-edge special effects, while always being mindful of environmental concerns to also create the safest and most energy-efficient products possible. Our products are designed and manufactured to conform to all international safety standards such as CE, LVD, and EMC.

Antari products are also widely used in residential/commercial security, pest control, industrial humidity control, horticultural uses, hospital sterilization, and leak detection.

Antari, an innovative leader in entertainment special effects, exceeding customer expectations since 1984.

New Product



SNOW MACHINE S-600



INCLUDED
W-2
Wireless Remote



INCLUDED
S-Meter
Fluid Tube with
Filter



INCLUDED
Hanging
Bracket



OPTIONAL
WTR-90



OPTIONAL
SC-4
Cable Remote



OPTIONAL
S-600-BH
Bottle Holder



S-600 Snow Machine



- Input voltage	US model: AC 100-120V 50 / 60Hz 10A EU model: AC 220-240V 50 / 60Hz 5A	- Connection	Neutral Powercon(Power) XLR 5-pin (DMX)
- Rated power	1000W	- Included accessories	W-2 Wireless Radio Transmitter S-Meter Fluid Tube with Filter Hanging Bracket
- Fluid consumption	400 ml/min	- Optional accessories	WTR-90 Wireless DMX SC-4 Cable Remote S-600-BH Bottle Holder (For 5-Liter Bottle. Bottle is not included)
- Compatible fluid	Antari SL-N Snow & Foam Fluid (New Formula) Antari SL-AN Premium Snow Fluid (New Formula) Antari SL-H Super Dry Snow Fluid Antari SL-C Anti-Freezing Snow Fluid Antari SL-UNW Snow Fluid	- Dimensions	L4612 W 596 H 629.6 mm 0.18.16 W 23.47 H 24.79 inch)
- Ambient temp. range	5°C - 40°C (41°F - 104°F)	- Weight	24 kg (52.9 lbs)
- Control	Manual / Timer / DMX 512 / Wireless Wireless DMX (Optional)		
- DMX channels	3 channels		



SCAN QR CODE



F-2 Fazer

- Input voltage	US model: AC 100-120V, 50/60Hz 8.5A EU model: AC 220-240V, 50/60Hz 6.5A	- Operating time	12 hrs of max. output
- Rated power	120V 1000W 240V 1450W	- Ambient temp. range	0°C - 40°C (32°F - 104°F)
- Warm-up time	1.5 minutes (approx.)	- Control	Manual, DMX512, Timer
- Fluid consumption	4.5 ml/min	- DMX channels	2 channels
- Fluid tank capacity	5 Liters (1.32 gallon)	- Connection	XLR 3-pin and 5-pin (DMX)
- Compatible fluid	Antari FLO-SE Heavy Fog Fluid	- Dimension	L 299 W 443 H 267.1 mm (L 11.7 W 17.5 H 0.52 inch)
		- Weight	16.7 kg (32.4 lbs)

SCN-600



SCAN QR CODE



SCN-600 Scent Machine

- Input voltage	AC 100-240V, 50 / 60Hz
- Power Consumption	7 W
- Fluid Consumption Rate	3 ml / hour
- Fluid tank capacity	150 ml
- Operating time	50 hour
- Ambient temp range	0°C - 40°C (32°F - 104°F)
- Control	Manual / Timer / DMX512
- Optional accessories	SCN-600-183 Hanging Bracket
- Dimension	L267 W175 H222 mm (10.5 WA 52 H8.74 inch)
- Weight	3.2 kg (7.05 lbs)



SCAN QR CODE



INCLUDED
Pressure Gauge
• 0-100 PSI
Air Hose
• 10 FT (3.05 M)



OPTIONAL
W-DMX-PCBR



OPTIONAL
FCH-1 Flight Case
Can be Fit in FCH-1 Flight Case

CH-1 Cinema Haze Machine

OPTIONAL

- Input voltage	AC 100-240V, 50/60Hz 6A	- Ambient temp / range	Manual, Timer, DMX ST2
- Rated power	120V 600W 240V 1250W	- Control	Wireless DMX (Optional) 1 / 3 / 5 channel
- Warm-up time	8 minutes (approx)	- DMX channels	Neutrik TRAJET Connector (Power)
- Fluid consumption	2 ml/min @40 psi / 2.76 bar	- Connection	XLR 3-pin and 5-pin (DMX) 9/16 - 18 RJI (Gas Inlet)
- Fluid tank capacity	2.5 Liters (0.66 gallon)	- Included Accessories	Pressure Gauge Air Hose
- Compatible fluid	Antari CHL-2 Haze Fluid CO ₂ , N ₂	- Optional Accessories	W-DMX-PCBR FCH-1 Flight Case
- Gas type	50 - 60psi / 3.4 bar - 4.1bar	- Dimension	1.579 W 1.64 H 311 mm (6.22 W 6.46 H 12.25 inch)
- Gas pressure range	0.36 Kg / hr @ 40 psi	- Weight	17 kg (37.48 lbs)
- Gas consumption	0.18 Kg / hr @ 20psi		
- Control interface	TFT LCD Touch Screen 0°C - 40°C (32°F - 104°F)		



SCAN QR CODE


INCLUDED
W-1 Wireless Remote

OPTIONAL
W-515-HB Hanging Bracket

W-530D Wireless & WDMX Control Fog Machine

Patent No. (CHINA) ZL201210471041.X ZL201220416299.0 | (TAINAN) M448221



- Input voltage	EJ model : AC 220-240V, 50/60Hz 4.5A	- DMX channels	1 channel
- Rated power	2570W	- Connection	Neutrik Powercon (Power)
- Warm-up time	12 minutes (approx.)		XLR 3-pin and 5-pin (DMX)
- Fluid consumption	160 ml/min	- Included accessories	W-1 Wireless Radio Transmitter
- Fluid tank capacity	6 Liters (1.59 gallon)	- Optional accessories	W-515-HB Hanging Bracket
- Compatible fluid	Antari FLG Heavy Fog Fluid Antari FLR Light Fog Fluid	- Dimension	L 561W 278 H 265 mm ($\bar{\bar{L}}$ 22.87 W 10.94 H 10.43 inch)
- Ambient temp. range	0°C - 40°C (32°F - 104°F)	- Weight	19.3 kg (42.71 lbs)
- Control	Manual, Timer, DMX 512 Wireless, Wireless DMX		



SCAN QR CODE


INCLUDED
W-1 Wireless Remote

OPTIONAL
W-515-HB Hanging Bracket

W-515D Wireless & WDMX Control Fog Machine

Patent No. (CHINA) ZL201210471041.X ZL201220416299.0 | (TAINAN) M448221



- Input voltage	US model : AC 100-120 V, 50/60 Hz 9A EJ model : AC 220-240 V, 50/60 Hz 4.5A	- DMX channels	1 channel
- Rated power	1500W	- Connection	Neutrik Powercon (Power)
- Warm-up time	10 minutes (approx.)		XLR 3-pin and 5-pin (DMX)
- Fluid consumption	100 ml/min	- Included accessories	W-1 Wireless Radio Transmitter
- Fluid tank capacity	6 Liters (1.59 gallon)	- Optional accessories	W-515-HB Hanging Bracket
- Compatible fluid	Antari FLG Heavy Fog Fluid Antari FLR Light Fog Fluid	- Dimension	L 561W 278 H 265 mm ($\bar{\bar{L}}$ 22.09 W 10.94 H 10.43 inch)
- Ambient temp. range	0°C - 40°C (32°F - 104°F)	- Weight	14.5 kg (31.97 lbs)
- Control	Manual, Timer, DMX 512 Wireless, Wireless DMX		



SCAN QR CODE



TESTED TO
ANSI/UL 914, 2ND EDITION
UL 914, 2ND EDITION
UL 914, 2ND EDITION



INCLUDED
W-1
Wireless Remote



OPTIONAL
W-510-W
Hanging Bracket

W-510 Wireless Control Fog Machine

Patent No. (USA) D499,376 | (CAN) 2,702,236/3,163,816 | (UK) 00391610-001 | (TAMBA) 0164272

- Input voltage	US model : AC 100-120V, 50/60Hz 8.5A EU model : AC 220-240V, 50/60Hz 4.5A	- Ambient temp. range	0°C - 40°C (32°F - 104°F)
- Rated power	120V 1000W 240V 1070W	- Control	DMX12, Wireless
- Warm-up time	13 minutes (approx.)	- DMX channels	1 channel
- Fluid consumption	90 ml/min	- Connection	EC (Power)
- Fluid tank capacity	2.8 Liters (0.74 gallon)		XLR 3-pin (DMX)
- Compatible fluid	Antari FLG Heavy Fog Fluid Antari FLR Light Fog Fluid	- Included accessories	W-1 Wireless Radio Transmitter
- Operating time	30 mins at max. output	- Optional accessories	W-510-W Hanging Bracket
		- Dimension	L 487 W 250 H 223 mm (0.19.17 W 9.84 H 8.78 inch)
		- Weight	11.4 kg (25.3 lbs)



SCAN QR CODE



TESTED TO
ANSI/UL 914, 2ND EDITION
UL 914, 2ND EDITION
UL 914, 2ND EDITION



INCLUDED
W-1
Wireless Remote

W-508 Wireless Control Fog Machine

- Input voltage	US model : AC 100-120V, 50/60Hz 6.7A EU model : AC 220-240V, 50/60Hz 3.5A	- Operating time	60 mins at max. output
- Rated power	800W	- Ambient temp. range	0°C - 40°C (32°F - 104°F)
- Warm-up time	2 minutes (approx.)	- Control	Manual, Wireless
- Fluid consumption	13 ml/min	- Included accessories	W-1 Wireless Radio Transmitter
- Fluid tank capacity	0.8 Liters (0.21 gallon)	- Dimension	L 315 W 128 H 216 mm (0.12.40 W 5.04 H 8.58 inch)
- Compatible fluid	Antari FLG Heavy Fog Fluid Antari FLR Light Fog Fluid	- Weight	3.8 kg (8.38 lbs)



SCAN QR CODE



OPTIONAL
W-DMX-PCBR



OPTIONAL
WTR-20



OPTIONAL
WTR-70

M-T1 Dual Output Stage Fog Machine



Patent No. (CHINA) ZL20121047041X, ZL201220465299.0 | (SANGMA) MA48321

- Input voltage	US model : AC 100-120V, 50/60Hz 13.3A EU model : AC 220-240V, 50/60Hz 6.67A	- DMX channels	1 or 3 channels
- Rated power	1600W	- Connection	Neutrik TRUE 1 Connector (Power) XLR 3-pin and 5-pin (DMX)
- Warm-up time	13 minutes (approx)	- Optional accessories	W-DMX-PCBR Wireless DMX WTR-20 Wireless WTR-70 Wireless DMX and Remote
- Fluid consumption	400 ml/min (100% output)	- Dimension	L 675 W 320 H 285 mm (L 26.57 W 12.6 H 11.22 inch)
- Fluid tank capacity	10 Liters (2.64 gallon)	- Weight	25 kg (55.1 lbs)
- Compatible fluid	Antari FLS Heavy Fog Fluid Antari FLR Light Fog Fluid Antari FLZ Long Hang Time Fog Fluid		
- Ambient temp/ range	0°C - 40°C (32°F - 104°F)		
- Control	Manual, Timer, DMX 512 Wireless (Optional) Wireless DMX (Optional)		



SCAN QR CODE

INCLUDED
M-20
Control ModuleOPTIONAL
M-30 Pro Wireless
Control Module

M-10 Stage Fog Machine

OPTIONAL

Patent No. (TAMANA) 363647 09985 030778

- Input voltage	EJ model : AC 220-240V, 50 / 60Hz 13A	- DMX channels	1 channel
- Rated power	3000W	- Connection	Neutrik Powercon (Power)
- Warm-up time	9.5 minutes (approx.)	- Included accessories	XLR 3-pin and 5-pin (DMX)
- Fluid consumption	250 ml/min	- Optional accessories	M-20 Control Module
- Fluid tank capacity	10 Liters (2.64 gallon)	- Dimension	M-30 Pro Wireless Control Module
- Compatible fluid	Antari FL6 Heavy Fog Fluid	- Weight	L 690 W 320 H 298 mm (8.27.77 W 12.60 H 11.73 inch)
	Antari FLR Light Fog Fluid		
- Ambient temp. range	0°C - 40°C (32°F - 104°F)		
- Control	Manual, Timer, DMX12		
	Wireless (Optional)		



SCAN QR CODE

INCLUDED
M-20
Control ModuleOPTIONAL
M-30 Pro Wireless
Control ModuleOPTIONAL
M-5-HB
Hanging Bracket

M-5 Stage Fog Machine

OPTIONAL

Patent No. (TAMANA) 363647 09985 030778

- Input voltage	US model : AC 100-120V, 50/60Hz 12.5A EJ model : AC 220-240V, 50/60Hz 6.6A	- DMX channels	1 channel
- Rated power	1500W	- Connection	Neutrik Powercon (Power)
- Warm-up time	8 minutes (approx.)	- Included accessories	XLR 3-pin and 5-pin (DMX)
- Fluid consumption	160 ml/min	- Optional accessories	M-20 Control Module
- Fluid tank capacity	10 Liters (2.64 gallon)	- Dimension	M-30 Pro Wireless Control Module
- Compatible fluid	Antari FL6 Heavy Fog Fluid	- Weight	L 668 W 320 H 276 mm (8.26.30 W 12.60 H 10.87 inch)
	Antari FLR Light Fog Fluid		
- Ambient temp. range	0°C - 40°C (32°F - 104°F)		
- Control	Manual, Timer, DMX12		
	Wireless (Optional)		



SCAN QR CODE

INCLUDED
M-21
Control ModuleOPTIONAL
M-31 Wireless
Control ModuleOPTIONAL
M-5-HB
Hanging Bracket

M-8 Stage Fog Machine

Patent No. (TAWAN) 363449 099085 010578



- Input voltage	US model : AC 100-120V, 50/60Hz 14.2A EU model : AC 220-240V, 50/60Hz 7.4A
- Rated power	7700W
- Warm-up time	9.5 minutes (approx.)
- Fluid consumption	240 ml/min
- Fluid tank capacity	10 Liters (2.64 gallons)
- Compatible fluid	Antari FLG Heavy Fog Fluid Antari FLR Light Fog Fluid
- Ambient temp. range	0°C - 40°C (32°F - 104°F)
- Control	Manual, Timer, DMX 512 Wireless (Optional)

- DMX channels	1 channel
- Connection	Neutrik Powercon (Power) XLR 3-pin and 5-pin (DMX)
- Included accessories	M-21 Control Module
- Optional accessories	M-31 Wireless Control Module M-5-HB Hanging Bracket
- Dimension	L 690 W 320 H 290 mm (L 27.17" W 12.60" H 11.73" inch)
- Weight	22 kg (48.5 lbs)



Z-3000II Fog Machine



- Input voltage	EU model : AC 220-240V, 50/60Hz 7VA	- Control	Manual, DMX 512, Timer
- Rated power	2500W		Wireless (Optional)
- Warm-up time	12 minutes (approx.)	- DMX channels	1 channel
- Fluid consumption	200 ml/min	- Connection	XL R 3-pin and 5-pin (DMX)
- Fluid tank capacity	6 Liters (1.59 gallon)	- Included accessories	Z-20 Control Module
- Compatible fluid	Antari FLG Heavy Fog Fluid Antari FLR Light Fog Fluid	- Optional accessories	Z-30 Pro Wireless Remote
- Ambient temp. range	0°C - 40°C (32°F - 104°F)	- Dimension	L 735 W 310 H 269 mm (ø. 28.94 W 12.20 H 10.59 inch)
		- Weight	19.9 kg (43.87 lbs)



Z-1500II Fog Machine



Patent No. (CHINA) ZL200530026266.8

- Input voltage	US model : AC100-120V, 50/60Hz 12.5A EU model : AC 220-240V, 50/60Hz 6.3A	- Control	Manual, DMX 512, Timer
- Rated power	1500W		Wireless (Optional)
- Warm-up time	10 minutes (approx.)	- DMX channels	1 channel
- Fluid consumption	110 ml/min	- Connection	XL R 3-pin and 5-pin (DMX)
- Fluid tank capacity	6 Liters (1.59 gallon)	- Included accessories	Z-20 Control Module
- Compatible fluid	Antari FLG Heavy Fog Fluid Antari FLR Light Fog Fluid	- Optional accessories	Z-30 Pro Wireless Remote
- Ambient temp. range	0°C - 40°C (32°F - 104°F)	- Dimension	L 688 W 285 H 257 mm (ø. 27.09 W 11.22 H 10.12 inch)
		- Weight	14 kg (30.86 lbs)



SCAN QR CODE


INCLUDED
Z-8 Cable Remote

OPTIONAL
Z-9 Wireless Remote

Z-1200II Fog Machine OPTIONAL

Patent No. (CHINA) ZL201220627928.9 ZL200530066268.7 | (TAYWAN) 476300

- Input voltage	US model : AC 100-120V, 50/60Hz 10A EU model : AC 220-240V, 50/60Hz 5.5A	- Control	Manual, DMX 512, Timer Wireless (Optional)
- Rated power	120V 1200W 240V 1200W	- DMX channels	1 channel
- Warm-up time	10 minutes (approx.)	- Connection	XR3 3-pin (DMX)
- Fluid consumption	72 ml/min	- Included accessories	Hanging Bracket Z-8 Cable Timer Remote
- Fluid tank capacity	2.5 Liters (0.66 gal)	- Optional accessories	Z-9 Wireless Remote
- Compatible fluid	Antari FLG Heavy Fog Fluid Antari FLR Light Fog Fluid	- Dimension	L 458 W 243 H 251 mm (L 18.03 W 9.57 H 9.88 inch)
- Ambient temp. range	0°C - 40 °C (32°F - 104°F)	- Weight	10.9 kg (24.03 lbs)



SCAN QR CODE


 COMPARED TO
ANSI/UL ETL-499
CONFORM TO
CUL ETL
CUL 60904

INCLUDED
Z-10 Cable Remote

OPTIONAL
Z-40 Cable Timer Remote

OPTIONAL
Z-50 Wireless Remote

Z-1000II Fog Machine OPTIONAL

Patent No. (CHINA) ZL2012206271338.0 ZL2005300662704.1 | (TAYWAN) 476300

- Input voltage	US model : AC 100-120V, 50/60Hz 9A EU model : AC 220-240V, 50/60Hz 4.5A	- DMX channels	1 channel
- Rated power	120V 1000W 240V 1050W	- Connection	IEC (Power) XR3 3-pin (DMX)
- Warm-up time	6 minutes (approx.)	- Included accessories	Hanging Bracket Z-10 Cable Remote
- Fluid consumption	56 ml/min	- Optional accessories	Z-40 Cable Timer Remote Z-50 Wireless Remote
- Fluid tank capacity	1.7 Liters (0.45 gallon)	- Dimension	L 433 W 198 H 214 mm (L 17.05 W 7.80 H 8.43 inch)
- Compatible fluid	Antari FLG Heavy Fog Fluid Antari FLR Light Fog Fluid	- Weight	6.6 kg (14.55 lbs)
- Ambient temp. range	0°C - 40 °C (32°F - 104°F)		
- Control	Manual, DMX 512 Timer (Optional) Wireless (Optional)		



SCAN QR CODE



Approved by
UL LLC, 3301
Knoxville Rd,
Farmingdale, NY
11735



INCLUDED
Z-10
Cable Remote



OPTIONAL
Z-40
Cable Timer Remote



OPTIONAL
Z-50
Wireless Remote



Z-800II Mobility and Portability Fog Machine



Patent No. (3884) 3,205,305/2291

- Input voltage	US model: AC 100-120V, 50/60Hz 4.7A EU model: AC 220-240V, 50/60Hz 3.5A	- Control	Manual Timer (Optional) Wireless (Optional)
- Rated power	800W	- Included Accessories	Z-10 Cable Remote
- Warm-up time	2 minutes (approx.)	- Optional accessories	Z-40 Cable Timer Remote Z-50 Wireless Remote
- Fluid consumption	13 ml/min	- Dimension	L 315 W 128 H 218 mm (12.40 W 5.04 H 8.58 inch)
- Fluid tank capacity	0.8 Liters (0.21 gallon)	- Weight	3.5 kg (7.71 lbs)
- Compatible fluid	Antari FL8 Heavy Fog Fluid Antari FLR Light Fog Fluid		
- Operating time	60 mins at max. output		
- Ambient temp. range	0°C - 40°C (32°F - 104°F)		



SCAN QR CODE



INCLUDED
W-2
Wireless Remote



OPTIONAL
M-9-HB
Fast Lock Bracket



OPTIONAL
WTR-90

M-9 Stage Fog Jet

INCLUDED



OPTIONAL



- Input voltage	US model: AC 100-120V, 50/60Hz 15.2A EU model: AC 220-240V, 50/60Hz 7.6A
- Rated power	1820W
- Light Source	27 x 8W LED (5-in-1LED)
- Warm-up time	14 minutes (approx.)
- Fluid consumption	400 ml/min (100% output)
- Fluid tank capacity	6 Liters (1.59 gallon)
- Compatible fluid	Antari FLC Super Light Fog Fluid
- Ambient temp / range	0°C - 40°C (32°F - 104°F)
- Output	10 meters height
- Control	Manual, Timer, DMX 512, Master / Slave, Wireless Wireless DMX (Optional)

- DMX channels	10 / 15 / 25 channels
- Connection	Neutrik TRIE 1 Connector (Power) XLR 3-pin and 5-pin (DMX)
- Included accessories	W-2 Wireless Radio Transmitter
- Optional accessories	WTR-90 Wireless DMX M-9-HB Fast lock bracket
- Dimension	L 393 W 321 H 420 mm (15.47 W 12.63 H 16.53 inch)
- Weight	25 kg (55.1 lbs)



INCLUDED
W-2 Wireless Remote



OPTIONAL
WTR-95

M-7X Stage Fog Jet



Patent No. (CHINA) ZL2012047641X ZL20122652099.0 | (TANWAN) M468321 S37058

- Input voltage	US model: AC 100-120V, 50/60Hz 13A EU model: AC 220-240V, 50/60Hz 4.5A	- DMX channels	9 channels
- Rated power	1516W	- Connection	Neutrik TRUE 1 Connector (Power) XLR 3-pin and 5-pin (DMX)
- Light source	22 X 3W LED (5Red, 4Green, 6Blue, 5Amber)	- Included accessories	W-2 Wireless Radio Transmitter
- Warm-up time	7 minutes (approx.)	- Optional accessories	WTR-95 Wireless DMX
- Fluid consumption	200 ml/min	- Dimension	L 346 W 193 H 383 mm (L 13.62 W 7.6 H 15 inch)
- Fluid tank capacity	2.4 Liters (0.63 gallon)	- Weight	14 kg (30.8 lbs)
- Compatible fluid	Antari FLC Super Light Fog Fluid		
- Ambient temp. range	0°C - 40°C (32°F - 104°F)		
- Output	10 meters height		
- Control	Manual, Timer, DMX 512, Master / Slave, Wireless Wireless DMX (Optional)		



SCAN QR CODE

INCLUDED
IR-2
Wireless RemoteOPTIONAL
FX-4
Flight Case

Z-1520 Two-Way Fog Jet



Patent No. (CHINA) ZL201201847041X ZL201201610299.0 | (TAINAN) MA48331 537958

- Input voltage	US model : AC 100-120V, 50/60Hz 13.5A EU model : AC 220-240V, 50/60Hz 7A	- Control	Manual, Timer, DMX 512 Master / Slave, Wireless
- Rated power	1016W	- DMX channels	8 channels
- Light source	22 X 3W LED (8 Red, 7 Green, 7 Blue)	- Connection	Neutrik Powercon (Power) XLR 3-pin and 5-pin (DMX)
- Warm-up time	5 minutes (approx.)	- Included accessories	IR-2 Wireless Radio Transmitter
- Fluid consumption	150 ml/min	- Optional accessories	FX-4 Flight Case
- Fluid tank capacity	2.4 Liters (0.63 gallon)	- Dimension	L 418 W 295 H 210 mm (16.46 W 11.61 H 8.27 inch)
- Compatible fluid	Antari FLC Super Light Fog Fluid	- Weight	10.4 kg (22.93 lbs)
- Ambient temp. range	0°C - 40°C (32°F - 104°F)		
- Output	6 meters height		



SCAN QR CODE

INCLUDED
IR-3
Wireless RemoteOPTIONAL
FX-4
Flight Case

W-715 Fog Jet



Patent No. (CHINA) ZL201201847041X ZL201201610299.0 | (TAINAN) MA48331 537958

- Input voltage	US model : AC 100-120V, 50/60Hz 14A EU model : AC 220-240V, 50/60Hz 7A	- Control	Manual, Timer, DMX 512, Wireless
- Rated power	1680W	- DMX channels	1 channel
- Warm-up time	7.5 minutes (approx.)	- Connection	Neutrik Powercon (Power) XLR 3-pin and 5-pin (DMX)
- Fluid consumption	300 ml/min	- Included accessories	IR-3 Wireless Radio Transmitter
- Fluid tank capacity	2.4 Liters (0.63 gallon)	- Optional accessories	FX-4 Flight case
- Compatible fluid	Antari FLC Super Light Fog Fluid	- Dimension	L 448 W 295 H 210 mm (17.64 W 11.61 H 8.27 inch)
- Ambient temp. range	0°C - 40°C (32°F - 104°F)	- Weight	15.5 kg (34.17 lbs)
- Output	8 meters height		



M-4 Stage Fog Jet



Patent No. (DINA) 3,202,026/47041X 3,202,026/5299 D | (TANAM) MVA821 537058

- Input voltage	US model : AC 100-120V, 50/60Hz 12.7A EU model : AC 220-240V, 50/60Hz 6.4A	- DMX channels	1 channel
- Rated power	1520W	- Connection	Neutrik Powercon (Power) XLR 3-pin and 5-pin (DMX)
- Warm-up time	5 minutes (approx.)	- Optional accessories	W-DMX-PCBR Wireless DMX WTR-30 Wireless Remote WTR-100 Wireless DMX and Remote
- Fluid consumption	120 ml/min	- Dimension	L 344 W 193 H 381 mm (13.54 W 7.60 H 15 inch)
- Fluid tank capacity	2.4 Liters (0.63 gallon)	- Weight	11 kg (24.25 lbs)
- Compatible fluid	Antari FLC Super Light Fog Fluid		
- Ambient temp. range	0°C - 40°C (32°F - 104°F)		
- Output	6 meters height		
- Control	Manual, Timer, DMX 512 Wireless (Optional) / Wireless DMX (Optional)		



Z-1020 Two-Way Fog Jet



Patent No. (DINA) 3,200,500/6297 Z

- Input voltage	US model : AC 100-120V, 50/60Hz 9A EU model : AC 220-240V, 50/60Hz 4.5A	- DMX channels	1 channel
- Rated power	1000W	- Connection	IEC (Power) XLR 3-pin (DMX)
- Warm-up time	13 minutes (approx.)	- Included accessories	Z-10 Cable Remote
- Fluid consumption	90 ml/min	- Optional accessories	Z-40 Cable Timer Remote Z-50 Wireless Remote FX-4 Flight Case
- Fluid tank capacity	2.4 Liters (0.63 gallon)	- Dimension	L 403 W 295 H 199 mm (15.86 W 11.61 H 7.83 inch)
- Compatible fluid	Antari FLC Super Light Fog Fluid Antari FLR Light Fog Fluid	- Weight	9.8 kg (21.61 lbs)
- Ambient temp. range	0°C - 40 °C (32°F - 104°F)		
- Output	5 meters height		
- Control	Manual, DMX512 Timer (Optional), Wireless (Optional)		



IP-1000 IP-Rated Fog Machine

Patent No. (TARWAA) MA20257 0742025

- Input voltage	US model : AC 100-120V, 50/60Hz 9A EU model : AC 220-240V, 50/60Hz 4.5A	- Ambient temp. range	0°C - 40°C (32°F - 104°F)
- Rated power	1070W	- Control	Manual
- Warm-up time	11.5 minutes (approx.)	- Included accessories	IP-10 Cable Remote
- Fluid consumption	90 ml/min	- Dimension	L 355 W 249 H 203 mm (L 13.98 W 9.80 H 7.99 inch)
- Compatible fluid	Antari FLG Heavy Fog Fluid Antari FLR Light Fog Fluid	- Weight	8.8 kg (19.40 lbs)



IP-1500 IP-Rated Fog Machine

Patent No. (TARWAA) MA20257 0742025

- Input voltage	US model : AC 100-120V, 50/60Hz 13A EU model : AC 220-240V, 50/60Hz 6.5A	- Control	Manual, Timer, DMX 512, Wireless
- Rated power	1550W	- DMX channels	1 channel
- Warm-up time	9 minutes (approx.)	- Included accessories	W-1 Wireless Radio Transmitter Hanging Bracket
- Fluid consumption	100 ml/min	- Connection	XLR 5-pin (DMX)
- Compatible fluid	Antari FLG Heavy Fog Fluid Antari FLR Light Fog Fluid	- Dimensions	L 465 W 222 H 250 mm (L 18.31 W 8.76 H 9.84 inch)
- Ambient temp. range	0°C - 40°C (32°F - 104°F)	- Weight	13.5 kg (29.76 lbs)



SCAN QR CODE



1. MB-1 Fog Machine Case | 2. Case | 3. Charger & Battery | 4. Bottle of Fog Fluid


MB-1-BCL
 MB-1-BCL Battery
 MB-1-BCL Charger

OPTIONAL
 DCP-12
 Power Adapter
 Dummy Battery

OPTIONAL
 MCT-2
 Cable Timer Remote

OPTIONAL
 MCR-F
 Wireless Remote

MB-1 Mobile Fog Machine **OPTIONAL**

- Input voltage	DC 12V (Battery) AC 100-240V, 50/60Hz (Battery charger)	- Included accessories	BAT-01 Battery / MB-1-BCL Charger FLM-05S Fog Fluid 500ML
- Rated power	75W	- Optional accessories	Rightcase DCP-12 Power Adapter and Dummy Battery MCT-2 Cable Timer Remote MCR-F Wireless Remote
- Warm-up time	1 second (approx)	- Dimension	L 228 W 66 H 102 mm (8.98 W 2.60 H 4.01 inch)
- Fluid consumption	1.1 ml/min (MAX Output)	- Weight	1 kg (without Battery) (2.2 lbs) 1.6 kg (with Battery) (3.97 lbs)
- Fluid tank capacity	110 ml (0.03 gallon)		
- Compatible fluid	Antari FLM-05S Fog Fluid		
- Ambient temp/ range	0°C - 40°C (32°F - 104°F)		
- Control	Manual Timer (Optional) / Wireless (Optional)		



SCAN TO LINK



MB-20X KIT

1. MB-20X Mobile Fog Machine | 2. Case | 3. Charger | 4. FLM-05P Bottle of 500cc



INCLUDED
MB-20X Mobile Fog Machine

INCLUDED
FLM-05P Case

OPTIONAL
Z-3 Cable Remote

OPTIONAL
WTR-20

OPTIONAL
MB-20S Power Base

MB-20X Mobile Fog Machine



- Input voltage	DC 12V (Battery) AC 100 - 240V, 50/60Hz (Battery charger)	- Connection	XLR 3-pin (DMO)
- Rated power	600W	- Included accessories	MB-20-B Battery MB-20-BCL Charger FLM-05P Fog Fluid 500ML FFT-20 Flightcase
- Warm-up time	1second (approx.)	- Optional accessories	Z-3 Cable Remote WTR-20 Wireless Remote MB-20S Power Base
- Fluid consumption	16 ml/min	- Dimension	L 293 W 108 H 236 mm (L 11.54 W 4.25 H 9.37 inch)
- Fluid tank capacity	0.4 Liter (0.11 gallon)	- Weight	8.5 kg (18.74 lbs)
- Compatible fluid	Antari FLM-05P Fog Fluid		
- Ambient temp. range	0°C - 40°C (32°F - 104°F)		
- Control	Manual, DMOS12 Wireless (Optional) Cable Remote (Optional)		
- DMX channels	1channel		



SCAN QR CODE



INCLUDED
MC-1
Cable Remote



OPTIONAL
FCR-1 Wireless
Remote Control

MB-55 Pumpless Off-Mains Capable Fog Machine

OPTIONAL 

- Input voltage	US model : AC 100-120V, 50/60Hz 10A EU model : AC 220-240V, 50/60Hz 6A	- Control	Manual
- Rated power	1450W	- Connection	IEC (Power)
- Warm-up time	7.5 minutes (approx.)	- Included accessories	MC-1 Cable Remote
- Fluid consumption	110 ml/min	- Optional accessories	FCR-1 Wireless Remote
- Compatible fluid	Antari FLP-700 Aerosol (doesn't included)	- Dimension	L346 W152 H251 mm (13.62 W5.98 H9.88 inch)
- Ambient temp. range	0°C - 40°C (32°F - 104°F)	- Weight	10.2 kg (22.49 lbs)



SCAN QR CODE



F-7 Smaze



- Input voltage	US model: AC 100-120V, 50/60Hz 13.5A EU model: AC 220-240V, 50/60Hz 7A	- Operating time	Fog Mode: 2.8 hrs at max. output
- Rated power	1600W	- Ambient temp. range	0°C - 40°C (32°F - 104°F)
- Warm-up time	8 minutes (approx)	- Control	Manual, Timer, DMX 512, Wireless DMX
- Fluid consumption	Fog Mode: 140ml/min Foaze Mode: 28ml/min	- DMX channels	3 channels
- Fluid tank capacity	5 Liters (1.32gal) x 2 Pcs	- Connection	Neutrik Powercon (Power) XLR 3-pin and 5-pin (DMX)
- Compatible fluid	Antari FLJ-SE Heavy Fog Fluid Antari FLJ-SE Heavy Density 6 Long Hang Time Fog Fluid Antari FLJ-SE Foaze Effects Fluid Longhang Time	- Dimension	L728 W 428 H 779 mm (L 28.66 W 16.85 H 29.31 inch)
	<small>(Only applicable to machines manufactured after May 2020)</small>	- Weight	52.5 kg (115.74 lbs)



SCAN QR CODE

OPTIONAL
W/ DMX PCB

F-4 Fazer



- Input voltage	US model : AC 100-120V, 50 / 60Hz 12.5A EU model : AC 220-240V, 50 / 60Hz 6.3A	- Ambient temp. range	0°C - 40°C (32°F - 104°F)
- Rated power	1450W	- Control	Manual, DMX512, Timer Wireless DMX (Optional)
- Warm-up time	1 minutes (approx.)	- DMX channels	2 channels
- Fluid consumption	6.7 ml/min	- Connection	XLR 3-pin and 5-pin (DMX)
- Fluid tank capacity	5 Liters (1.32 gallon)	- Optional accessories	W-DMX-PCBR Wireless DMX
- Compatible fluid	Antari FLG-SE Heavy Fog Fluid Antari FLH-SE Heavy Density Long/Long Time Fog Fluid	- Dimension	1.545 W x 58 H x 285 mm (6.2146 W x 18.03 H x 11.22 inch)
- Operating time	12 hrs at max. output	- Weight	20.3 kg (44.75 lbs)



SCAN TO GO



OPTIONAL
W-DMX-PCSR



OPTIONAL
WTR-10



OPTIONAL
WTR-40

F-1 Fazer

OPTIONAL OPTIONAL

Patent No. (TAMAM) 518180 0707441 537058

- Input voltage	US model: AC 100-120V, 50 / 60Hz 6.8A EU model: AC 220-240V, 50 / 60Hz 3.5A	- Control	Manual DMX512 Timer Wireless (Optional) Wireless DMX (Optional)
- Rated power	800W	- DMX channels	2 channels
- Warm-up time	4.5 minutes (approx)	- Connection	Neutrik Powercon (Power) XLR 3-pin and 5-pin (DMX)
- Fluid consumption	0.5 ml/min	- Optional accessories	W-DMX-PCSR Wireless DMX WTR-10 Wireless Remote WTR-40 Wireless DMX and Remote
- Fluid tank capacity	2.4 Liters (0.63 gallon)	- Dimension	1.678 W 275 H 327 mm (8.24.33 W 10.83 H 12.87 inch)
- Compatible fluid	Antari FLG Heavy Fog Fluid Antari FLH Heavy Density & Long Hang Time Fog Fluid Antari FLZ Faze Effects Fluid Long Hang Time (Only applicable to machines manufactured after May 2023)	- Weight	14.1 kg (31.09 lbs)
- Operating time	4.5 hrs at max. output		
- Ambient temp. range	0°C - 40°C (32°F - 104°F)		



SCAN QR CODE

OPTIONAL
Z-3OPTIONAL
WTR-20

Z-390 Fazer



- Input voltage	US model: AC 100-120V, 50/60Hz 8.5A EU model: AC 220-240V, 50/60Hz 6.5A
- Rated power	120V 1000W 240V 1450W
- Warm-up time	1.5 minutes (approx.)
- Fluid consumption	8 ml/min
- Fluid tank capacity	4 Liters (1.06 gallon)
- Compatible fluid	Antari FLG Heavy Fog Fluid
- Operating time	8 hrs at max. output
- Ambient temp. range	0°C - 40°C (32°F - 104°F)
- Control	Manual, DMX 512, Timer Wireless (Optional)

- DMX channels	2 channels
- Connection	IEC (Power) XLR 3-pin and 5-pin (DMO)
- Optional accessories	Ranging Bracket Z-3 Cable Remotes
- Dimension	WTR-20 Wireless Remote L 368 W 277.7 H 267.4 mm (\approx 14.49 W 10.93 H 10.53 inch)
- Weight	9.45 kg (20.83 lbs)



SCAN QR CODE



CONFORMS TO
AMERICAN AND CANADIAN
REQUIREMENTS FOR
UL LISTED
UL TYPE LISTED
UL ETL

OPTIONAL
Z-3OPTIONAL
FT-350
Flight CaseOPTIONAL
FX-4
Flight Case

Z-350 Fazer

Patent Nos. (US) 3,699,216 | (CN) 2012205271338.0 | (EU) 00291610-001 | (JAPAN) 0156272

- Input voltage	US model: AC 100-120V, 50/60Hz 6A EU model: AC 220-240V, 50/60Hz 3.15A
- Rated power	120V 700W 240V 750W
- Warm-up time	4.5 minutes (approx.)
- Fluid consumption	3 ml/min
- Fluid tank capacity	1.3 Liters (0.34 gallon)
- Compatible fluid	Antari FLG Heavy Fog Fluid Antari FLH Heavy Density & Long Hang Time Fog Fluid
- Operating time	7 hrs at max. output
- Ambient temp. range	0°C - 40°C (32°F - 104°F)

- Control	Manual, DMX 512
- DMX channels	2 channels
- Connection	IEC (Power) XLR 3-pin (DMO)
- Optional accessories	Z-3 Cable Remotes FT-350 Flight Case FX-4 Flight Case
- Dimension	L 320 W 153 H 391 mm (\approx 12.60 W 6.02 H 15.39 inch)
- Weight	8.5 kg (18.74 lbs)



SCAN QR CODE



OPTIONAL
W-DMX-PCBR

HZ-1000 Haze Machine

OPTIONAL 

- Input voltage	US model: AC 100-120V, 50/60Hz 9.6A EU model: AC 220-240V, 50/60Hz 4.8A	- DMX channels	2 channels
- Rated power	7150W	- Connection	Neutrik TRUE 1 Connector (Power) XLR 3-pin and XLR 5-pin (DMX)
- Fluid consumption	2.2 ml/min	- Optional accessories	W-DMX-PCBR Wireless DMX
- Fluid tank capacity	6.4 Liters (1.69 gallon)	- Dimension	L 692 W 570 H 670 mm (L 27.26 W 22.07 H 24.01 inch)
- Compatible fluid	Antari HZL Haze Fluid	- Weight	76.6 kg (168.6 lbs)
- Operating time	4.0 hrs max. output		
- Ambient temp. range	0°C - 40°C (32°F - 104°F)		
- Control	Manual, Timer, DMX 512 Wireless DMX (Optional)		



SCAN QR CODE



APPROVED BY
ETL LISTING
INSTITUTE
2013.11.01



HZ-500 Haze Machine

Patent No. (US) 8,888,888 279419 302767

- Input voltage	US model : AC 100-120V, 50/60Hz 3.5A EU model : AC 220-240V, 50/60Hz 2A
- Rated power	120W 400W 240W 480W
- Fluid consumption	1.1 ml/min
- Fluid tank capacity	2.5 Liters (0.66 gallon)
- Compatible fluid	Antari HD Haze Fluid
- Operating time	37 hrs at max. output

- Ambient temp. range	0°C - 40°C (32°F - 104°F)
- Control	Manual, Timer, DMX 512
- DMX channels	1 channel
- Connection	EC (Power) XLR 5-pin (DMX)
- Dimension	L 490 W 351 H 338 mm (0. 19.29 W 13.82 H 13.31 inch)
- Weight	31.5 kg (69.45 lbs)



SCAN QR CODE



INCLUDED
HC-1 Cable
Timer Remote



OPTIONAL
HCR-1
Wireless Remote

HZ-400 Haze Machine

Patent No. (US) 8,888,888 279419 302767

- Input voltage	US model : AC 100-120V, 50/60Hz 3.92A EU model : AC 220-240V, 50/60Hz 2A
- Rated power	470W
- Fluid consumption	1.1 ml / min
- Fluid tank capacity	2.5 Liters (0.66 gallon)
- Compatible fluid	Antari HD Haze Fluid
- Operating time	37 hrs at max. output
- Ambient temp. range	0°C - 40°C (32°F - 104°F)
- Control	Manual, Timer, DMX Wireless (Optional)

- DMX channels	1 channel
- Connection	EC (Power) XLR 3-pin (DMX)
- Included accessories	HC-1 Cable Timer Remote
- Optional accessories	HCR-1 Wireless Remote
- Dimension	L 500 W 320 H 319 mm (L 19.69 W 12.60 H 12.56 inch)
- Weight	18.5 kg (40.79 lbs)



HZ-350 Haze Machine

Patent No. (1466A) 278479 302797

- Input voltage	US model : AC 100-120V, 50/60Hz 3.25A EU model : AC 220-240V, 50/60Hz 1.7A
- Rated power	390W
- Fluid consumption	0.8 ml/min
- Fluid tank capacity	2.5 Liters (0.66 gallon)
- Compatible fluid	Antari HZL Haze Fluid
- Operating time	52 hrs at max. output
- Ambient temp. range	0°C - 40°C (32°F - 104°F)
- Control	Manual, Timer, DMX, Wireless

- DMX channels	1 channel
- Connection	IEC (Power) XLR 5-pin (DMX)
- Included Accessories	W-1 Wireless Radio Transmitter
- Optional accessories	HC-1 Cable Timer Remote
- Dimension	L 492 W 273 H 376 mm (6.79 37 W 10.75 H 12.40 inch)
- Weight	14.2 kg (31.31 lbs)



INCLUDED
W-1 Wireless Remote



OPTIONAL
HC-1 Cable Timer Remote



HZ-100 Haze Machine

Patent No. (1466A) 278479 302797

- Input voltage	US model : AC 100-120V, 50/60Hz 3.25A EU model : AC 220-240V, 50/60Hz 1.7A
- Rated power	390W
- Fluid consumption	0.7 ml/min
- Fluid tank capacity	2.5 Liters (0.66 gallon)
- Compatible fluid	Antari HZL Haze Fluid
- Operating time	60 hrs at max. output
- Ambient temp. range	0°C - 40°C (32°F - 104°F)

- Control	Manual Timer (Optional), Wireless (Optional)
- Connection	IEC (Power)
- Optional accessories	HC-1 Cable Timer Remote HCR-1 Wireless Remote
- Dimension	L 484 W 250 H 294 mm (0.19 06 W 9.84 H 11.57 inch)
- Weight	13.2 kg (29.1 lbs)



OPTIONAL
HC-1 Cable Timer Remote



OPTIONAL
HCR-1 Wireless Remote

DNG-250 Low Fog Generator

- Input voltage	US model: AC 100-120V, 50/60Hz EU model: AC 220-240V, 50/60Hz
- Refrigerant	120V R-404A, 1.76LB (0.8kg) 240V R-404A, 1.76LB (0.8kg)
- Start current	120V / 77.4A 240V / 36.1A
- Rated power	120V / 14.2A 240V / 6.5A
- Fog power consumption	120V / 1600W 13.5A 240V / 1600W 6.8A
- Warm-up time	6 minutes (approx.)
- Fluid consumption	100 ml/min
- Fluid tank capacity	10 Liters (2.64 gallon)
- Compatible fluid	Antari FLL Low Fog Effects Fluid
- Ambient temp range	5°C - 40°C (41°F - 104°F)
- Output	120 m ³ / min
- Control	Manual, Timer, DMX 512
- DMX channels	2 channel
- Connection	Neutrik Powercon XLR 3-pin and 5-pin (DMX)

- Optional Accessories	FDNG-250 Flight Case
- Dimension	L 780 W 608 H 715 mm (\approx 30.7 W 23.93 H 28.15 inch)
- Weight	100 kg (226.6 lbs)



SCAN QR CODE

OPTIONAL
FDNG-250
Flight Case

DNG-200 Low Fog Generator

- Input voltage	US model: AC 100-120V, 50/60Hz EU model: AC 220-240V, 50/60Hz
- Refrigerant	120V R-404A, 1.98LB (0.9kg) 240V R-404A, 1.98LB (0.9kg)
- Start current	120V / 61A 240V / 21A
- Rated power	120V / 6.7A 240V / 3.2A
- Fog power consumption	120V / 1400W 12A 240V / 2500W 10.5A
- Warm-up time	120V / 24 minutes (approx) 240V / 12 minutes (approx)
- Fluid consumption	100 ml/min
- Fluid tank capacity	10 Liters (2.64 gallon)
- Compatible fluid	Antari FLL Low Fog Effects Fluid
- Ambient temp range	5°C - 40°C (41°F - 104°F)
- Output	80 m ³ / min
- Control	Manual, Timer, DMX 512
- DMX channels	1 channel
- Included accessories	D-20 Remote
- Optional Accessories	FDNG-250 Flight Case
- Dimension	L 780 W 608 H 715 mm (\approx 30.7 W 23.93 H 28.15 inch)
- Weight	120 kg (264.55 lbs)



SCAN QR CODE

INCLUDED
D-20
Control ModuleOPTIONAL
FDNG-250
Flight Case



SCAN QR CODE



DNG-100 Fog Cooler

Patent No. (TAIWAN) T03549

- Input voltage	US model: AC 100-120V, 50/60Hz EU model: AC 220-240V, 50/60Hz
- Rated power	120V 750W 240V 600W
- Refrigerant	120V R-404A, 1.39LB (0.63 Kg) 240V R-404A, 1.39LB (0.63 Kg)
- Start Current	120V / 61A 240V / 21A
- Rated Current	120V / 6.7A 240V / 3.2 A
- Ambient temp. range	5°C - 40°C (41°F - 104°F)
- Control	On/Off switch control
- Included accessories	FT-3D Fog Conducting Hose, FTA-II
- Optional accessories	F1A-1, F1A-2A, F1A-3
- Dimension	L 784 W 608 H 479 mm (30.86 W 23.93 H 18.85 inch)
- Weight	72 kg (158.73 lbs)



INCLUDED
F1-10



INCLUDED
F1A-1



OPTIONAL
F1A-1



OPTIONAL
F1A-2A



OPTIONAL
F1A-3

ICE-101 ICE Fog Machine

Patent No. (TAIWAN) 57819 5464W

- Input voltage	US model: AC 100-120V, 50/60Hz 9.5A EU model: AC 220-240V, 50/60Hz 5A
- Rated power	1100W
- Warm-up time	4.5 minutes (approx.)
- Fluid consumption	25 ml/min
- Fluid tank capacity	2.5 Liters (0.66 gallon)
- Compatible fluid	Antari FLL Low Fog Effects Fluid Antari FLC Super Light Fog Fluid Antari FLR Light Fog Fluid
- Ambient temp. range	0°C - 40°C (32°F - 104°F)
- Output	43 m ³ / min
- Control	Manual, Timer, DMX 512
- DMX channels	1 channel
- Connection	IEC (Power) XLR 5-pin (DMX)
- Included accessories	2-8 Cable Timer Remote
- Dimension	L 660 W 355 H 443 mm (0.25 98 W 13.98 H 17.44 inch)
- Weight	24.4 kg (53.79 lbs)



SCAN QR CODE



INCLUDED
2-8
Cable Remote

SPECIAL EFFECTS



S-500 & S-500L Snow Machine

OPTIONAL



OPTIONAL



Patent No. (USA) US9668082 | (CHINA) ZL201520662013 | (TAINAN) HST600 104105677

S-500 Specification

- Input voltage	US model: AC 100-120V, 50/60Hz 7.5A EU model: AC 220-240V, 50/60Hz 3 BA	- DMX channels	2 channels
- Rated power	120V 900W 240V 890W	- Connection	Neutrik-Powercon (Power) XLR 3-pin and 5-pin (DMX)
- Fluid consumption	400 ml/min	- Included accessories	ST-10 Meter Extension Hose
- Fluid tank capacity	20 Liters (5.28 gallon)	- Optional accessories	W-DMX-PCBR Wireless DMX WTR-20 Wireless Remote WTR-70 Wireless DMX and Remote SC-3 Cable Remote
- Compatible fluid	Antari SL-20N Snow Foam Fluid (New Formula) Antari SL-20AN Premium Snow Fluid (New Formula) Antari SL-20H Super Dry Snow Fluid Antari SL-20C Anti-Freezing Snow Fluid Antari SL-20UV Snow Fluid	- Dimension	ST-10 Meter Extension Hose PM-1 Pan Motor L 592 W 551 H 651 mm (L 23.31 W 21.69 H 25.63 inch)
- Ambient temp. range	5°C - 40°C (41°F - 104°F)	- Weight	37.2 kg (82.01 lbs)
- Control	Manual, Timer, DMX 512 Wireless (Optional), Wireless DMX (Optional)		

S-500L Specification

- Included accessories	ST-10 Meter Extension Hose x2 pcs
- Dimension	L 803 W 603 H 651 mm (L 31.61 W 23.74 H 25.63 inch)
- Weight	44.4 kg (97.82 lbs)



SCAN QR CODE



certified to
UL 60917
Evaluations by
www.intertek.com

Intertek

OPTIONAL
W-DMX-PCBROPTIONAL
WTR-20OPTIONAL
WTR-70OPTIONAL
SC-3
Cable RemoteOPTIONAL
PM-1
Pan MotorOPTIONAL
ST-10/10 Meter
Extension Hose



INCLUDED
W-1
Wireless Transmitter



OPTIONAL
SC-3
Cable Remote



OPTIONAL
SW-300-FB
Floor Bracket



SW-300 Snow Machine



- Input voltage	US model : AC 100-120V, 50/60Hz 7.5A EU model : AC 220-240V, 50/60Hz 3.8A
- Rated power	880W
- Fluid consumption	280 ml/min (100% output)
- Fluid tank capacity	5 Liters (1.32 gallon)
- Compatible fluid	Antari SL-N Snow & Foam Fluid (New Formula) Antari SL-AN Premium Snow Fluid (New Formula) Antari SL-H Super Dry Snow Fluid Antari SL-C Anti-Freezing Snow Fluid Antari SL-UWV Snow Fluid
- Ambient temp / range	5°C - 40°C (41°F - 104°F)
- Control	Manual, Timer, DMX 512, Wireless

- DMX channels	2 channels
- Connection	IEC (POWER) XLR 5-pin (DMO)
- Included accessories	W-1 Wireless Radio Transmitter Hanging Bracket SC-3 Cable Remote
- Optional accessories	SW-300-FB Floor Bracket
- Dimension	L 500 W 276 H 311.8 mm (0.19 68 W 10.87 H 12.27 inch)
- Weight	11.5 kg (25.35 lbs)



SCAN QR CODE


INCLUDED
 SC-2
 Cable Remote

OPTIONAL
 SW-300-FB
 Floor Bracket

S-200X Snow Machine

Patent No. (TAMM) 207075 M44446 947258

- Input voltage	US model : AC 100-120V, 50/60Hz 7.5A EU model : AC 220-240V, 50/60Hz 3.8A	- Ambient temp. range	5°C - 40°C (41°F - 104°F)
- Rated power	880W	- Control	Manual, DMX 512
- Fluid consumption	160 ml/min	- DMX channels	1 channel
- Fluid tank capacity	5 Liters (1.32 gallon)	- Connection	IEC (Power) XLR 3-pin (DMX)
- Compatible fluid	Antari SL Snow & Foam Fluid Antari SL-A Premium Snow Fluid Antari SL-N Snow & Foam Fluid (New Formula) Antari SL-AN Premium Snow Fluid (New Formula) Antari SL-H Super Dry Snow Fluid Antari SL-C Anti-Freezing Snow Fluid Antari SL-UW/W Snow Fluid	- Included accessories	Hanging Bracket SC-2 Cable Remote
		- Optional accessories	SW-300-FB Floor Bracket
		- Dimension	L 505 W 276 H 310 mm (L 19.88 W 10.87 H 12.20 inch)
		- Weight	11.5 kg (25.35 lbs)



SCAN QR CODE


INCLUDED
 SC-2
 Cable Remote

OPTIONAL
 SW-300-FB
 Floor Bracket

S-100X Snow Machine

- Input voltage	US model : AC 100-120V, 50/60Hz 7.5A EU model : AC 220-240V, 50/60Hz 3.8A	- Ambient temp. range	5°C - 40°C (41°F - 104°F)
- Rated power	880W	- Control	Manual, DMX 512
- Fluid consumption	160 ml/min	- DMX channels	1 channel
- Fluid tank capacity	5 Liters (1.32 gallon)	- Connection	IEC (Power) XLR 3-pin (DMX)
- Compatible fluid	Antari SL Snow & Foam Fluid Antari SL-A Premium Snow Fluid Antari SL-N Snow & Foam Fluid (New Formula) Antari SL-AN Premium Snow Fluid (New Formula) Antari SL-H Super Dry Snow Fluid Antari SL-C Anti-Freezing Snow Fluid Antari SL-UW/W Snow Fluid	- Included accessories	Hanging Bracket SC-2 Cable Remote
		- Optional accessories	SW-300-FB Floor Bracket
		- Dimension	L 505 W 276 H 310 mm (L 19.88 W 10.87 H 12.20 inch)
		- Weight	11 kg (24.25 lbs)



SCAN QR CODE

S-120 Foam Machine

- Input voltage	US model : AC 100-120V, 50/60Hz 7.5A EU model : AC 220-240V, 50/60Hz 3.8A
- Rated power	880W
- Fluid consumption	350 ml/min
- Fluid tank capacity	5 Liter (1.32 gal/Jan)
- Compatible fluid	Antari SL Snow Foam Fluid Antari SL-N Snow Foam Fluid (New Formula)
- Operating time	14 mins at max. output
- Ambient temp. range	5°C - 40°C (41°F - 104°F)
- Control	Manual
- Connection	IEC (Power)
- Dimension	L 600 W 260 H 300 mm (L 23.62 W 10.24 H 11.81 inch)
- Weight	12 kg (26.46 lbs)



SCAN QR CODE

BCT-1
Cable Timer RemoteBCR-1
Wireless Remote

B-200 High Output Bubble Machine



- Input voltage	US model : AC 100-120V, 50/60Hz 1A EU model : AC 220-240V, 50/60Hz 0.5A
- Rated power	120W
- Fluid consumption	50 ml/min
- Fluid tank capacity	2 Liters (0.53 gallon)
- Compatible fluid	Antari BL Bubble Fluid
- Operating time	40 mins at max. output
- Ambient temp. range	5°C - 40°C (41°F - 104°F)
- Control	Manual, DMX 512 Timer (Optional) Wireless (Optional)

- DMX Channels	1 channel
- Connection	IEC (Power) XLR 5-pin (DMX)
- Included accessories	Hanging Bracket
- Optional accessories	BCT-1 Timer Remote BCR-1 Wireless Remote
- Dimension	L 421 W 250 H 220 mm (16.57 W 9.84 H 8.29 inch)
- Weight	11 kg (24.25 lbs)



SCAN QR CODE



CONFORMS TO
ANSI/CES E83.18
CORRESPONDING TO
CANULISA E83-18/CSA-C22.2 NO. 68-09



B-100 Bubble Machine

- Input voltage	US model: AC 100-120V, 50/60Hz 0.25A EU model: AC 220-240V, 50/60Hz 0.13A	- Operating time	1.6 hrs of max. output
- Rated power	120V 30W 240V 32W	- Ambient temp. range	5°C - 40°C (41°F - 104°F)
- Fluid consumption	8.3 ml/min	- Control	Manual
- Fluid tank capacity	0.7 Liters (0.18 gallon)	- Included accessories	Hanging Bracket
- Compatible fluid	Antari BL Bubble Fluid	- Dimension	1.341 W 1.018 H 217 mm (5.1343 W 6.6918 H 8.54 inch)
		- Weight	4.2 kg (9.26 lbs)



SCAN QR CODE



INCLUDED

W-1 Wireless Transmitter

W-101 Wireless Control Bubble Machine

INCLUDED



Patent No. (3194) 31,237,632/7434.A

- Input voltage	US model: AC 100-120V, 50/60Hz 0.25A EU model: AC 220-240V, 50/60Hz 0.13A	- Ambient temp. range	5°C - 40°C (41°F-104°F)
- Rated power	32W	- Control	Manual, Wireless
- Fluid consumption	8.3 ml/min	- Included accessories	W-1 Wireless Radio Transmitter Hanging Bracket
- Fluid tank capacity	0.7 Liters (0.18 gallon)	- Dimension	1.350 W 1.018 H 217 mm (5.1378 W 6.6918 H 8.54 inch)
- Compatible fluid	Antari BL Bubble Fluid	- Weight	4.8 kg (10.58 lbs)
- Operating time	1.4 hrs of max. output		



SCAN QR CODE



OPTIONAL
AF-5X-HB
Hanging Bracket



AF-5X Effects Fan

- Input voltage	US model : AC 100-120V, 50/60Hz 13A EU model : AC 220-240V, 50/60Hz 7.25A
- Rated power	1600W
- Ambient temp. range	0°C - 40°C (32°F - 104°F)
- Air flow	1743 CFM (High) 1567 CFM (Medium) 1351 CFM (Low)
- Fan speed	1242 - 1480 rpm (AC 110V / 60Hz) 1175 - 1289 rpm (AC 220V / 60Hz)

- Housing Material	Flame Retardant Plastic (PE 973)
- Control	Manual, Timer, DMX 512
- DMX channels	1 channel
- Connection	XLR 5-pin (DMO)
- Optional accessories	AF-5X-HB Hanging Bracket
- Dimension	L 558 W 465 H 578 mm (L 21.97 W 18.31 H 22.76 inch)
- Weight	17.5 kg (38.58 lbs)

AF-5XR Effects Fan



- Included accessories	Wireless
- Optional accessories	AF-5X-HB Hanging Bracket



INCLUDED
S-1
Wireless Transmitter



SCAN QR CODE

OPTIONAL
WTR-20OPTIONAL
Z-3
Cable Remote

AF-4 Effects Fan

OPTIONAL



- Input voltage	US model : AC 100-120V, 50/60Hz 0.85A EU model : AC 220-240V, 50/60Hz 0.42A
- Rated power	100W
- Ambient temp. range	0°C - 40°C (32°F - 104°F)
- Air flow	1867 CFM (AC 110V / 60 Hz) 1035 CFM (AC 220V / 60 Hz)
- Fan speed	1242 - 1480 rpm (AC 110V / 60Hz) 1175 - 1289 rpm (AC 220V / 60Hz)
- Control	Manual, Timer, DMX 512 Wireless (Optional)

- DMX channels	1 channel
- Connection	XLR 5-pin (DMX)
- Optional accessories	WTR-20 Wireless Remote (AF-4R) Z-3 Cable Remote
- Dimension	L 353 W 377 H 517 mm (L 13.90 W 14.84 H 20.35 inch)
- Weight	9 kg (19.84 lbs)



SCAN QR CODE

OPTIONAL
AF-3X NeutrikOPTIONAL
WTR-20OPTIONAL
Z-3
Cable Remote

AF-3 / AF-3X Effects Fan



AF-3S Effects Fan

AF-3 / AF-3X / AF-3S Effects Fan

OPTIONAL



- Input voltage	US model : AC 100-120V, 50/60Hz 1.1A EU model : AC 220-240V, 50/60Hz 0.53A
- Rated power	127W
- Ambient temp. range	0°C - 40°C (32°F - 104°F)
- Air flow	530 CFM(50Hz) 600 CFM(60Hz)
- Fan speed	750 - 2550 rpm (50Hz) 750 - 2800 rpm (60Hz)
- Control	Manual, DMX 512 Wireless (Optional)
- DMX channels	1 channel
- Connection	Neutrik Powercon (Power) XLR 5-pin (DMX)

- Optional accessories	WTR-20 Wireless Remote Z-3 Cable Remote AF-3 / AF-3X L 124 W 316 H 348 mm (L 4.88 W 12.44 H 14.49 inch) AF-3S L 160 W 312 H 336.4 mm (L 6.29 W 12.28 H 13.24 inch)
- Dimension	
- Weight	AF-3 / AF-3X 6 kg (13.23 lbs) AF-3S 6.4 kg (14 lbs)

AF-3X model does not equip with Neutrik Powercon output socket.



Fire Training Smoke Generator



SCAN QR CODE



INCLUDED
2.3
Wireless Transmitter



OPTIONAL
2.3
Cable Remote

FT-200 Fire Training Smoke Generator



Patent No. (USA) 6,337,058

- Input voltage	US model : AC 100-120V, 50 / 60Hz 13.5A EU model : AC 220-240V, 50 / 60Hz 7A	- Control	Manual, Timer, DMX512, Wireless
- Rated power	1600W	- DMX channels	1 channel
- Warm-up time	7.5 minutes (approx.)	- Connection	Neutrik Powercon (Power) XLR 5-pin (DMX)
- Fluid consumption	270 ml/min	- Optional accessories	Z-3 cable remote
- Fluid tank capacity	2.4 Liters (0.63gals)	- Dimension	L301 W195 H114 mm (11.85 W1 68 H16.3 inch)
- Compatible fluid	Antari FLP Fire Training Fog Fluid	- Weight	16 kg (35.28 lbs)
- Ambient temp. range	0°C - 40°C (32°F - 104°F)		
- Output	8 meters height		



SCAN QR CODE



INCLUDED

Wireless Transmitter



OPTIONAL

Cable Remote

FT-100 Fire Training Smoke Generator

INCLUDED



Part No. (TANWA) 537055

- Input voltage	US model : AC 100-120V, 50 / 60Hz 12A EU model : AC 220-240V, 50 / 60Hz 6A	- Control	Manual, Timer, DMX512, Wireless
- Rated power	120V 1500W 240V 1450W	- DMX channels	1 channel
- Warm-up time	8.5 minutes (approx.)	- Connection	Neutrik Powercon (Power) XLR 5-pin (DMX)
- Fluid consumption	100 ml/min	- Optional accessories	Z-3 cable remote
- Fluid tank capacity	6 Liters (1.59 gallon)	- Dimension	L580 W279 H265 mm (22.84 W10.99 H10.44 inch)
- Compatible fluid	Antari FLP Fire Training Fog Fluid	- Weight	14.6 kg (32.19 lbs)
- Ambient temp. range	0°C - 40°C (32°F - 104°F)		



SCAN QR CODE



FT-50 Pumpless Off-Mains Capable Smoke Generator

Patent No. (JAPAN) 527058

- Input voltage	US model : AC 100-120V, 50 / 60Hz 12A EU model : AC 220-240V, 50 / 60Hz 6A	- Ambient temp. range	0 °C - 40 °C (32 °F - 104 °F)
- Rated power	1450W	- Control	Manual
- Warm-up time	7.5 minutes (approx.)	- Connection	IEC (Power)
- Fluid consumption	110 ml/min	- Dimension	L346 W152 H251 mm (13.62 W5.98 H9.88 inch)
- Compatible fluid	Antari P.F.P-700 Aerosol	- Weight	9.8 kg (21.61 lb)

FT-55 Specification

OPTIONAL 

- Included accessories	MC-1 Cable Remote
- Optional accessories	FCS-1 Wireless Remote
- Dimension	L346 W152 H251 mm (13.62 W5.98 H9.88 inch)
- Weight	10.2 kg (22.49 lb)



MC-1
Cable Remote



FCS-1 Wireless
Remote Control



SCAN QR CODE



FT-20X KIT



1. FT-20X & Battery Smoke Generator | 2. Case | 3. Charger | & Bottle of 500cc

OPTIONAL
Z-3
Cable RemoteOPTIONAL
WTR-20OPTIONAL
FT-20XS
Power Base

FT-20X DC12V Battery-Operated Portable Smoke Generator

OPTIONAL

- Input voltage	DC 12V (Battery) AC 100-240V, 50-60Hz (Battery charger)	- Connection	XLR 3-pin (DMO)
- Rated power	600W	- Included accessories	FT-20X-8 Battery FT-20X-BCL Charger FLM-8SP Fog Fluid 500ML FFT-20 Flightcase
- Warm-up time	1 second (approx.)	- Optional accessories	WTR-20 Wireless Remote Z-3 Cable Remote FT-20XS Power Base
- Fluid consumption	16 ml/min	- Dimension	L293 W108 H238 mm (11.54 Wx 4.25 Hx 9.37 inch)
- Fluid tank capacity	0.4 Liters (0.11 gallon)	- Weight	8.5 kg (18.74 lbs)
- Compatible fluid	Antari FLM-8SP Fog Fluid		
- Ambient temp. range	0 °C - 40 °C (32 °F - 104 °F)		
- Control	DMOST2, Manual Wireless (Optional) Cable Remote (Optional)		
- DMX channels	1 channel		



ACCESSORIES

LIQUID SUPPLY
CONTROL MODULE
REMOTE
FLIGHT CASE
BRACKET
ADAPTOR

45



SCAN QR CODE

LCU-2S Liquid Supply System

- Input voltage	US model : AC 100-120V, 50/60Hz 0.46A EU model : AC 220-240V, 50/60Hz 0.23A	- Dimension	Supply unit L 179 W 167 H 84 mm (7.05 W 6.57 H 3.31 inch) Tank unit L 158 W 103 H 248 mm (6.22 W 4.06 H 9.76 inch)
- Rated power	55W	- Weight	Supply unit 1.95 kg (4.30 lbs) Tank unit 1.8 kg (3.97 lbs)
- Compatible fluid	Antari Fluid		
- Ambient temp. range	5°C - 40°C (41°F - 104°F)		
- Control	Auto		
- Connection	IEC (Power) XLR 3-pin (Data)		



SCAN QR CODE

LCU-1S Smart Liquid Control Unit

- Input voltage	US model : AC 100-120V, 50/60Hz 0.35A EU model : AC 220-240V, 50/60Hz 0.18A	- DMX channels	1 channel
- Rated power	40W	- Connection	XLR 3-pin (DMX)
- Fluid consumption	400 ml / min	- Optional accessories	2-8 Remote Control SC-2 Remote Control
- Compatible fluid	Antari Fluid	- Dimension	L 203 W 179 H 95 mm (8.799 W 7.05 H 3.78 inch)
- Ambient temp. range	5°C - 40°C (41°F - 104°F)	- Weight	3.3 kg (7.28 lbs)
- Control	Manual, Timer, DMX ST2		



W-1 Wireless Radio Transmitter

- **Working Distance** : Up to 50 m (164 ft)
- **Function** : Wireless ON/OFF
There are 2 radio frequencies can be chosen. They are 315MHz and 433MHz respectively.
- **Compatible With** : AF-3R, AF-3XR, AF-5XR, F-1, HZ-350, P-1500, M-4, SW-250, SW-300, W-101, W-510, W-508, W-5150, W-5300, W-715
- **Features** :
 1. Simple setting and operation : one click to register ; one click to go ; and one click to stop.
 2. Interchangeability : W-1 wireless radio transmitter is compatible with all Antari W series (signal receiver)
 3. Modern metallic design honors your vision and professional.



W-2 Wireless Radio Transmitter

- **Working Distance** : Up to 50 m (164 ft)
- **Function** : Wireless ON/OFF and Volume UP/DOWN
There are 2 radio frequencies can be chosen. They are 315MHz and 433MHz respectively.
- **Compatible With** : AF-4R, M-7X, M-9, M-11, MG-20X, S-500, Z-390, Z-1520, FT-20X ~ FT-100 ~ FT-250
- **Features** :
W-2 is the advanced version of W-1 wireless radio transmitter. Compare to W-1, the biggest difference is W-2 comes with 4 buttons, which makes it more versatile.

W-1 RECEIVER



W-2 RECEIVER



W-DMXW1R



W-DMX and W-1 Receiver

W-DMXW2R



W-DMX and W-2 Receiver

W-DMX-PCB



W-DMXR



W-DMX Receiver





W-1 Transmitter

W-1 Receiver



W-2 Transmitter

W-2 Receiver



W-3 Transmitter

W-3 Receiver

WTR-10

Compatible With:
AF-3, AF-SX, F-1, SW-250X

WTR-20

Compatible With:
AF-4R, FT-20X, MB-20X, M-TL,
S-500, S-500L, Z-390

WTR-30

Compatible With:
M-4



W-1 Transmitter

W-DMXR

W-DMX-PCB



W-2 Transmitter

W-DMXR



W-DMXR

W-DMX-PCB

WTR-40

Compatible With:
F-1

WTR-50

Compatible With:
F-1

WTR-60

Compatible With:
F-1



W-2 Transmitter

W-DMXR

W-DMX-PCB



W-2 Transmitter

W-DMXR



W-DMXR

W-DMX-PCB

WTR-70

Compatible With:
M-TL, S-500, S-500L

WTR-80

Compatible With:
M-TL, S-500, S-500L

WTR-90

Compatible With:
M-7X, S-500, S-500L, M-9, M-TL



W-1 Transmitter

W-DMXR

W-DMX-PCB



W-DMXR

W-DMX-PCB

WTR-100

Compatible With:
M-4

W-DMX-PCBR

Compatible With:
CR-1, F-1, F-4, M-4, M-TL, HZ-1000, S-500, S-500L

CONTROL WIRELESS TIMER MODULE

D-20

- Compatible model: DMG-200
- Cable length: 2M
- Connector: 5 Pin XLR
- Function: Timer with interval, duration and volume; 4 Volume output choices (nonstop, high, medium & low volume); Set DMX addresses; manual ON/OFF.



M-20

- Compatible model: M-5, M-10
- Cable length: 2M
- Connector: 5 Pin XLR
- Function: Timer with interval, duration and volume; set DMX address; continuous fogging; manual ON/OFF.



M-21

- Compatible model: M-6
- Cable length: 2M
- Connector: 5 Pin XLR
- Function: Timer with interval, duration and volume; set DMX address; manual ON/OFF.

M-30PRO

- **Compatible model:** M-3, M-10
- **Working distance:** Wireless, distance may vary depending on the interference
- **Cable length:** 2M
- **Connector:** 5 Pin XLR
- **Features:** Included all functions of Z-20 remote and comes with a W-1 Transmitter to activate and deactivate the machine fogging. For W-1 Wireless Transmitter, there are 2 radio frequencies can be chosen: 315MHz or 433MHz.

**M-31**

- **Compatible model:** M-8
- **Working distance:** Wireless, distance may vary depending on the interference
- **Cable length:** 2M
- **Connector:** 5 Pin XLR
- **Features:** Included all functions of Z-20 remote and comes with a W-1 Transmitter to activate and deactivate the machine fogging. For W-1 Wireless Transmitter, there are 2 radio frequencies can be chosen: 315MHz or 433MHz.

**Z-20**

- **Compatible model:** Z-1500II, Z-3000II
- **Cable length:** 2M
- **Connector:** 5 Pin XLR
- **Function:** Timer with interval, duration and volume; set DMX address; continuous fogging; manual ON/OFF.

Z-30PRO

- **Compatible model:** Z-1500II, Z-3000II
- **Working distance:** Wireless, distance may vary depending on the interference
- **Cable length:** 2M
- **Connector:** 5 Pin XLR
- **Features:** Included all functions of Z-20 remote and comes with a W-1 Transmitter to activate and deactivate the machine fogging. For W-1 Wireless Transmitter, there are 2 radio frequencies can be chosen: 315MHz or 433MHz.



Wireless distance may vary depending on the interference.

Z-3 Remote

- Cable Length : 3m
- Connector : 1/4 Stereo
- Function : Volume, ON/OFF
- Compatible With : AF-3, AF-4, FT-20X, FT-200, MB-20, Z-350, Z-390



Z-8 Timer Remote

- Cable Length : 25 ft
- Connector : 4 Pin XLR
- Function : Timer with interval, duration and volume; continuous fogging; manual ON/OFF
- Compatible With : Z-1200II, ICE-101, LCU-1S



Z-9 Wireless Remote

- Working Distance : Up to 50m
- Connector : 1/4 Stereo
- Function : Wireless ON/OFF
- Compatible With : Z-1200II

Z-10 Remote

- Cable Length : 25 ft
- Connector : 1/4 Stereo
- Function : ON/OFF (Toggle Switch)
- Compatible With : Z-800II, Z-1000II, Z-1020, B-100X



Wireless distance may vary depending on the interference.

Z-40 Timer Remote

- Cable Length: 25 ft
- Connector: 1/4 Stereo
- Function: Timer with interval and duration; manual ON/OFF
- Compatible With: Z-800II, Z-1000II, Z-1020



Z-50 Wireless Remote



- Working Distance: Up to 50 m
- Connector: 1/4 Stereo
- Function: Wireless ON/OFF
- Compatible With: Z-800II, Z-1000II, Z-1020



BCR-1 Wireless Remote



- Working Distance: Up to 50 m
- Connector: 1/4 Stereo
- Function: Wireless ON/OFF
- Compatible With: B-100X, B-200

BCT-1 Timer Remote

- Cable Length: 25 ft
- Connector: 1/4 Stereo
- Function: Timer with interval and duration; manual ON/OFF
- Compatible With: B-100X, B-200



Wireless distance may vary depending on the interference.

HC-1 Timer Remote

- Cable Length: 25 ft
- Connector: 1/4 Stereo
- Function: Timer with interval and duration; manual ON/OFF
- Compatible With: HZ-100, HZ-350, HZ-400



HCR-1 Wireless Remote



- Working Distance: Up to 50 m
- Connector: 1/4 Stereo
- Function: Wireless ON/OFF
- Compatible With: HZ-100, HZ-400



MCR-1F Wireless Remote



- Working Distance: Up to 50 m
- Connector: 4 Pin DIN
- Function: Wireless ON/OFF
- Compatible With: MB-1

MCT-2 Timer Remote

- Cable Length: 25 ft
- Connector: 4 Pin DIN
- Function: Timer with interval and duration; manual ON/OFF
- Compatible With: MB-1



Wireless distance may vary depending on the interference.

MC-1 Remote

- Cable Length: 25 ft
- Function: Manual ON/OFF
- Compatible With: FT-55, MB-55

FCR-1 Remote 

- Cable Length: Up to 50M
- Function: Wireless ON/OFF
- Compatible With: MB-55, FT-55



SC-2 Remote

- Cable Length: 25 ft
- Connector: 4 Pin XLR
- Function: ON/OFF and volume
- Compatible With: LCU-YS, S-100X, S-200X, SW-250, SW-250X



SC-3 Remote

- Cable Length: 25 ft
- Connector: 4 Pin XLR
- Function: Volume and Func. manual ON/OFF
- Compatible With: SW-300, S-500(J)



SC-4 Remote

- Cable Length: 25 ft
- Connector: 6 Pin XLR
- Function: Volume and Func. manual ON/OFF
- Compatible With: S-600



Wireless distance may vary depending on the interference.

Hanging Bracket Sets



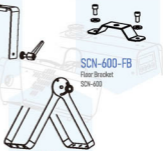
M-5-HB
Hanging Bracket
For M-5, M-8



W-515-HB
Hanging Bracket
For W-5150, W-5300



W-510-HB
Hanging Bracket
For W-510



SCN-600-FB
Floor Bracket
SCN-600



SW-300-FB
Floor Bracket
S-1000X, S-2000X, SW-250, SW-250X, SW-300

Fluid Tubes / Adaptors / Filters



- FT-4: 4mm Fluid tube
- FT-6: 6mm Fluid tube

- FLF-4: Fluid filter for 4mm tube
- FLF-6: Fluid filter for 6mm tube



- FTA-64:
Adaptor for 4mm to 6mm
tube connection



- FTA-66:
Adaptor for 6mm to
6mm tube connection



- FTA-664:
T-type adaptor for two
6mm tubes to one
4mm tube connection

Remote Control Extension Cables



EXT-1 25 ft. extension cable
with 1/4" stereo plug



EXT-3 25 ft. extension cable with
5-pin XLR connectors

EXT-4 25 ft. extension cable with
3-pin XLR connectors

EXT-6 25 ft. extension cable with
4-pin XLR connectors



EXT-5 25 ft. extension cable with
5-pin DIN connectors



Fog Hose Adaptor

Adaptor for connecting fog conducting hose FT-10 for DNG-100 Fog Cooler to the desired Anitari fog machine.

FTA-1:

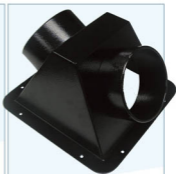
Adaptor for connecting fog conducting hose FT-10 to M-5, M-6, M-10, W-510, W-5150, W-5300, IP-1000 and IP-1500 fog machines, in order to achieve strategic fog placement.

FTA-2A:

The same function as the FTA-1, specifically designed for Z-10000 and Z-12000 fog machines.

FTA-3:

The same function as the FTA-1, specifically designed for Z-15000 and Z-30000 fog machines.



FTA-200 Fog Conducting Hose Adaptor

Fog conducting hose adaptor for DNG-200 and DNG-250. The hoses adaptor can be installed on it and this can split low fog output into two.



FTA-11

Fog conducting hose adaptor for DNG-100. The hoses adaptor can be installed on it and this can split low fog output into two.



FT-10 Fog Conducting Hose

Fog conducting hose with 12cm diameter and is 10 meters in length.

The DNG-100 Low fog cooler is equipped with one FT-10 to connect to the fog machine.

This additional hose is needed to redirect the fog output coming out of the DNG-100.

With this optional hose, fog can be extended anywhere within 10m of the DNG-100.



FCH-1

- Dimensions (mm) : L 900 x W 574 x H 938
- Weight : 51.6 kg
- Compatible With : CH-1



FDNG-250

- Dimensions (mm) : L 665 W 695 H 1020
- Weight : 46.5 kg
- Compatible With : DMO-200, DMO-250



FZ-350

- Dimensions (mm) : L 429 W 230 H 478
- Weight : 8.9 kg
- Compatible with : Z-350



FX-4

- Dimensions (mm) : L 495 W 478 H 500
- Weight : 12.3 kg
- Compatible With : Z-1000, Z1620, W-715, Z-350
- Two units in one case



FX-6

- Dimensions (mm) : L 730 W 453 H 425
- Weight : 12.3 kg
- Compatible With : S-100X, S-200X, SW-250, SW-300



58

FLUID

FOG FLUID

HAZE FLUID

SNOW FLUID

BUBBLE FLUID

SCENT

FLUID

Antari premium fog fluids are optimized for use with all Antari fog machines and are suitable for use in most fogger models. All Antari fog fluids are water-based compositions that leave no oily residue and are eco-friendly to our environment and safe for human contact.

All of our fluids are odorless, non-irritating, non-toxic, and non-flammable and are designed to preserve the longevity of your machines, using Antari fog fluids in your Antari fog machine will actually increase the reliability of your fog machines for years.

Our Safety Data Sheets (SDS) and safety reports are compiled using the strictest standards by SGS, an internationally known independent laboratory.



FLR Light Fog Fluid

FEATURES

FLR Light Fog Fluid (red color) produces fog which disappears in the air faster.

FLG Heavy Fog Fluid

FEATURES

FLG Heavy Fog Liquid (green color) produces fog which has a longer lasting time.

AVAILABLE IN THE FOLLOWING SIZES:





FLH
Heavy Fog Superior Hang Time Fog Fluid

FLH (Clear) – Heavy Fog Superior Hang Time Fog Fluid. For use in fog and haze machine



FLJ
Medium Blast Light Hang Time Fog Fluid

FLJ (Red Color) – Medium Density with a Light Hang Time. For use in fog machine only.



FLC Super Light Fog Fluid

FLC Super Light Fog Fluid (Clear).
For use in fog jet machine & low fog machine.



FLL Low Fog Effects Fluid

FLL Low Fog Fluid (blue color).
For low fog machine: ICE-301, DND-200,
DND-250.



FLZ Faze Effects Fluid
Long Hang Time

FLZ Long Hang Time Fog Fluid (Orange color).
For use in: M-7L.

F-L-F-7 (manufactured after May 2020)



CHL-2 Haze Fluid

CHL-2 is a high quality oil based liquid for CH-1 cinema haze to produce fine and translucent haze.

The haze produced by CH-1 & CHL Liquid can set off the stage lighting beautifully and create a wonderful stage design.



Bubble Fluid

Antari bubble fluid is a water-based composition that creates vivid, transparent bubbles. For use in B-100, B-200 & W-101.



FLM-05S Fog Fluid

FLM-05S is a special formulated water based fluid for battery operated machine. Capable to generate pure and clean fog.

FOR USE IN:
MB-1 mobile fogger.



FLM-05P Fog Fluid

FLM-05P is a special formulated water based fluid for battery operated machine. Capable to generate pure and clean fog.

FOR USE IN:
MB-20X, FT-20X mobile fogger.



UVL-01 UV Fluorescent Agent

Antari Blue UV Fluorescent Agent for use in all Snow and Bubble fluid. Turn your Snow or Bubble effect into a dramatic blacklight effect applications.

AVAILABLE IN 100ml (3.38 fluid ounce)

INSTRUCTIONS
Mix one bottle of Antari UVL-01 (100ml) with up to 5L liters of any Bubble or Snow fluid to turn your snow or bubble effect into a vibrant UV effect that will glow in the dark when used with a professional UV Blacklight. *Must be used with a UV source to achieve glowing effect.



Oil Based Haze Fluid

Specialty composed haze fluid. It's a non-toxic solution that produces a pure, translucent haze with a long hanging time.

It's compatible with Antari HZ series model:
HZ-100(250)/400/500/1000
Available in 1 Liter & 5 Liter.

SNOW LIQUID



SL-UV Snow Fluid

The artificial snowflakes produced by UV snow fluids react to UV lights and glow in the dark with UV light sources.

COMPATIBLE MODEL

S-100X, S-200X, SW-250 / SW-250X, SW-300, S-500 / S-500L, S-600



SL-C Anti-Freezing Snow Fluid

- Anti-freezing snow fluid can satisfy the requirements of operating snow machines in low temperature environment.
- The lowest working temperature is -10°C (14°F)

COMPATIBLE MODEL

S-100X, S-200X, SW-250 / SW-250X, SW-300, S-500 / S-500L, S-600



SL-H Super Dry Snow Fluid

- SL-H can produce the highest snow volume and driest snowflakes among all Antari snow liquids.
- Good for outdoor operation.

COMPATIBLE MODEL

S-100X, S-200X, SW-250 / SW-250X, SW-300, S-500 / S-500L, S-600



SL-AN Premium Snow Fluid (New Formula)

- Compare to SL-N, the snowflakes created by SL-AN are slightly larger in size and dissipate in air quicker.
- Good for indoor and outdoor operation.

COMPATIBLE MODEL

S-100X, S-200X, SW-250 / SW-250X, SW-300, S-500 / S-500L, S-600



SL-N Snow & Foam Fluid (New Formula)

- Artificial snowflake produced by SL-N is smaller in size, drier & lighter compared to SL & SL-A.
- Bigger snowflakes volume compared to SL.
- Good for indoor and outdoor operation.

COMPATIBLE MODEL

S-100X, S-200X, SW-250 / SW-250X, SW-300, S-500 / S-500L, S-600



SL-A Premium Snow Fluid

- Compare to SL, snowflakes created by SL-A are larger in volume and can dissipate in air quicker.
- Good for indoor and outdoor operation.

COMPATIBLE MODEL

S-100X, S-200X, SW-250 / SW-250X



SL Snow & Foam Fluid

- Mildest formula. Artificial snowflakes produced by it with the least irritating smell and big snowflakes
- Good for indoor and outdoor operation.

COMPATIBLE MODEL

S-100X, S-120, S-200X, SW-250 / SW-250X



MG-550 Magican

The world's smallest haze spray; the Magican produces a long lasting haze with 1-2 hours of hanging time. One Magican will haze continuously for five minutes.

A haze effect can be achieved after approximately 20 seconds of spraying in an average sized room, allowing for approximately 15 hazing sessions per can.

The Magican is designed for situations where only a relatively small amount of haze is needed. It is perfect for mobile DJs and home parties.



C-300 Cleaning and Maintenance Solution

Antari C-300 designed for maintaining pump of effects machine as its best performance.

By applying this special formulated solution on a regular basis will keep the pump at optimal condition.

Use this maintenance solution before storage will prevent the pump from dry out and clogging.

Scent

P-1 : Rose



P-2 : Mint



P-4 : Apple



P-6 : Lemon



P-7 : Strawberry



P-9 : Orange



Simply put, a few drops of these high quality scent into the fluid tank. You will have scented fog right away! 6 fragrances are available in a standard 20 ml bottle. The ideal mix ratio of scent and fluid is 1:1000. For instance, adding 1ml scent into 1 liter fog fluid can have the best effect of scented fog.

FLP Fire Training Smoke Fluid



FLM-05P Smoke Fluid

FEATURES

FLM-05P is a special formulated water based fluid for battery operated machine. Capable to generate pure and clean fog.

FOR USE IN: MB-20X, FT-20X mobile fogger.



FLP-700 Fire Training Smoke Fluid

FLP-700 is water based FLP fog fluid filled in a pressurized canister which can be installed in fog machines without fluid pump.

FEATURES

FLP Fog Fluid in a Pressurized Canister

FOR USE IN

FT-50, FT-55, MB-55



FLP Fire Training Smoke Fluid

Antari FLP fog fluid is specifically made for Fire Training machines.

FEATURES

- The ingredients of this water-based fog liquid are refined from palm trees.
- It is 100% natural, completely non-toxic and safe.
- It can produce high density fog and is ideal for using in poor ventilation environments (such as fire drill or rescue training...etc.)

FOR USE IN: FT-100, FT-200

	MODEL	RATED POWER	WARM UP TIME (approx.)	OUTPUT (cu ft / min)	FLUID TANK CAPACITY (LITER)	HANGING BRACKET	REMOTE CONTROL
	AF-3(AF-3X)	127W	N/A	N/A	N/A	YES	• Z-3
	AF-4(AF-4R)	100W	N/A	N/A	N/A	YES	• Z-3
	AF-8X(AF-8XR)	1600W	N/A	N/A	N/A	• AF-5-HB	N/A
	B-100	120V/300W, 240V/120W	N/A	N/A	07	YES	N/A
	B-200	120W	N/A	N/A	2	YES	N/A
NEW!	DH-1	120V/600W, 240V/1250W	8 minutes	N/A	2.5	N/A	N/A
	DHG-100	120V/750W, 240V/600W	N/A	N/A	N/A	N/A	N/A
	DHG-200	120V/1400W 240V/2500W	120V/24 minutes 240V/12 minutes	80m ³ /min	10	N/A	N/A
	DHG-250	1600W	6 minutes	120m ³ /min	10	N/A	N/A
	F-1	800W	4.5 minutes	N/A	2.4	N/A	N/A
NEW!	F-2	120V/1000W, 240V/1450W	15 minutes	N/A	5	N/A	N/A
	F-4	1450W	1 minutes	N/A	5	N/A	N/A
	F-7	1600W	8 minutes	N/A	5x2 pcs	N/A	N/A
	FT-20X	600W	1sec	N/A	0.4	N/A	• Z-3
	FT-50(FT-55)	1450W	7.5 minutes	N/A	N/A	N/A	FT-55-MC-1
	FT-100	120V/500W, 240V/1450W	8.5 minutes	N/A	6	N/A	• Z-3
	FT-200	1600W	7.5 minutes	8 meters height	2.4	N/A	• Z-3
	H2-100	390W	N/A	N/A	2.5	N/A	N/A
	H2-350	390W	N/A	N/A	2.5	N/A	N/A
	H2-400	470W	N/A	N/A	2.5	N/A	N/A
	H2-500	120V/1400W, 240V/1800W	N/A	N/A	2.5	N/A	N/A
	H2-1000	1850W	N/A	N/A	6.4	N/A	N/A
	ICF-101	1100W	4.5 minutes	43m ³ /min	2.5	N/A	N/A
	IP-1000	1070W	11.5 minutes	N/A	N/A	N/A	IP-10
	IP-1500	1550W	9 minutes	N/A	N/A	YES	N/A
	LCU-1S	40W	N/A	N/A	N/A	N/A	N/A
	LCU-2S	95W	N/A	N/A	N/A	N/A	N/A
	M-4	1520W	5 minutes	6 meters height	2.4	N/A	N/A
	M-5	1500W	8 minutes	N/A	10	• M-5-HB	M-20
	M-7(XGBA)	1516W	7 minutes	10 meters height	2.4	N/A	N/A
	M-8	1700W	9.5 minutes	N/A	10	• M-5-HB	M-21
	M-9	1820W	14 minutes	10 meters height	6	N/A	N/A
	M-10	3000W	9.5 minutes	N/A	10	N/A	M-20
	M-11	1600W	13 minutes	N/A	10	N/A	N/A
	MB-1	75W	1sec	N/A	10 ml	N/A	N/A
	MB-20X	600W	1sec	N/A	0.4	N/A	• Z-3
	MB-55	1450W	7.5 minutes	N/A	N/A	N/A	MC-1
	S-120	880W	N/A	N/A	5	YES	N/A
	S-100X	880W	N/A	N/A	5	YES	SC-2
	S-200X	880W	N/A	N/A	5	YES	SC-2
	SW-250	120V/1290W, 240V/880W	N/A	N/A	5	YES	• SC-2
	SW-300	880W	N/A	N/A	5	YES	• SC-3
	S-500	120V/1900W, 240V/890W	N/A	N/A	20	N/A	• SC-3
NEW!	S-600	1200W	N/A	N/A	5	YES	• SC-4
NEW!	SCN-600	7W	N/A	N/A	150ml	N/A	N/A
	W-101	30W	N/A	N/A	07	YES	N/A
	W-508	800W	2 minutes	N/A	0.8	N/A	N/A
	W-510	120V/1000W, 240V/1070W	13 minutes	N/A	2.8	• W-510-HB	N/A
	W-5150	1500W	10 minutes	N/A	6	• W-515-HB	N/A
	W-5100	2570W	12 minutes	N/A	6	• W-515-HB	N/A
	W-715	1680W	7.5 minutes	8 meters height	2.4	N/A	N/A
	Z-800H	800W	2 minutes	N/A	0.8	N/A	Z-10
	Z-1000H	120V/1000W, 240V/1050W	6 minutes	N/A	17	YES	Z-10
	Z-1020	1000W	13 minutes	5 meters height	2.4	N/A	Z-10
	Z-1200H	120V/1200W, 240V/1300W	10 minutes	N/A	2.5	YES	N/A
	Z-1500H	1500W	10 minutes	N/A	6	N/A	Z-20
	Z-3000H	2500W	12 minutes	N/A	6	N/A	Z-20
	Z-350	120V/700W, 240V/750W	4.5 minutes	N/A	1.3	N/A	• Z-3
	Z-390	120V/1000W, 240V/1450W	15 minutes	N/A	4	YES	• Z-3
	Z-1520	1516W	5 minutes	6 meters height	2.4	N/A	N/A

MODEL	DMX ON-BOARD	W-DMX ON-BOARD	TIMER REMOTE	WIRELESS REMOTE	25 FT REMOTE EXTENSION	COMPATIBLE WITH DMX-100	DMX-100 ADAPTOR	MACHINE LINKABLE
AF-3/AF-3X	YES	N/A	N/A	● WTR-10	EXT-1	N/A	N/A	YES
AF-4/AF-4R	YES	N/A	N/A	AF-4R-WTR-20	EXT-1	N/A	N/A	YES
AF-5X/AF-5XR	YES	N/A	N/A	AF-SR-WTR-10	N/A	N/A	N/A	YES
B-100	N/A	N/A	N/A	N/A	N/A	N/A	N/A	N/A
B-200	YES	N/A	● BCT-1	● BCR-1	EXT-1	N/A	N/A	YES
NEW! CH-1	YES	● W-DMX-PCBR	N/A	N/A	N/A	N/A	N/A	YES
DMX-100	N/A	N/A	N/A	N/A	N/A	-	-	N/A
DMX-200	YES	N/A	N/A	N/A	EXT-3	-	-	N/A
DMX-250	YES	N/A	N/A	N/A	N/A	-	-	YES
F-1	YES	● W-DMX-PCBR ● WTR-40	N/A	● WTR-10 ● WTR-40	N/A	N/A	N/A	YES
NEW! F-2	YES	N/A	N/A	N/A	N/A	N/A	N/A	YES
F-4	YES	● W-DMX-PCBR	N/A	N/A	N/A	N/A	N/A	YES
F-7	YES	YES	N/A	N/A	N/A	N/A	N/A	YES
FT-20X	YES	N/A	N/A	● WTR-20	EXT-1	N/A	N/A	YES
FT-50/FT-55	N/A	N/A	N/A	● FT-55-FCR-1	N/A	N/A	N/A	N/A
FT-100	YES	N/A	N/A	W-2	EXT-1	YES	FTA-1	YES
FT-200	YES	N/A	N/A	W-2	EXT-1	N/A	N/A	YES
HZ-100	N/A	N/A	● HC-1	● HCR-1	EXT-1	N/A	N/A	N/A
HZ-350	YES	N/A	● HC-1	W-1	EXT-1	N/A	N/A	YES
HZ-400	YES	N/A	HC-1	● HCR-1	EXT-1	N/A	N/A	YES
HZ-500	YES	N/A	N/A	N/A	N/A	N/A	N/A	YES
HZ-1000	YES	● W-DMX-PCBR	N/A	N/A	N/A	N/A	N/A	YES
ICE-101	YES	N/A	Z-8	N/A	EXT-6	N/A	N/A	YES
IP-1000	N/A	N/A	N/A	N/A	N/A	YES	FTA-1	N/A
IP-1500	YES	N/A	N/A	W-1	N/A	YES	FTA-1	YES
LCJ-15	YES	N/A	N/A	N/A	N/A	N/A	N/A	YES
LCJ-2S	N/A	N/A	N/A	N/A	N/A	N/A	N/A	N/A
M-4	YES	● W-DMX-PCBR ● WTR-100	N/A	● WTR-30 ● WTR-100	N/A	N/A	N/A	YES
M-5	YES	N/A	M-20	● M-30PRO	EXT-3	YES	FTA-1	YES
M-7XRGB	YES	● WTR-90	N/A	W-2	N/A	N/A	N/A	YES
M-8	YES	N/A	M-21	● M-21	EXT-3	YES	FTA-1	YES
M-9	YES	● WTR-90	N/A	W-2	N/A	N/A	N/A	YES
M-10	YES	N/A	M-20	● M-30PRO	EXT-3	YES	FTA-1	YES
M-11	YES	● W-DMX-PCBR ● WTR-70	N/A	● WTR-20 ● WTR-70	N/A	N/A	N/A	YES
MB-1	N/A	N/A	● MCT-2	● MCR-F	N/A	N/A	N/A	N/A
MB-20X	YES	N/A	N/A	● WTR-20	EXT-1	N/A	N/A	YES
MB-55	N/A	N/A	N/A	● FCR-1	N/A	N/A	N/A	N/A
S-120	N/A	N/A	N/A	N/A	N/A	N/A	N/A	N/A
S-100X	YES	N/A	N/A	N/A	EXT-6	N/A	N/A	YES
S-200X	YES	N/A	N/A	N/A	EXT-6	N/A	N/A	YES
SM-250	YES	N/A	N/A	W-1	EXT-6	N/A	N/A	YES
SM-330	YES	N/A	N/A	W-1	EXT-6	N/A	N/A	YES
S-500	YES	● W-DMX-PCBR ● WTR-70	N/A	● WTR-20 ● WTR-70	EXT-6	N/A	N/A	YES
NEW! S-500	YES	● WTR-90	N/A	W-2	N/A	N/A	N/A	YES
NEW! SCN-600	YES	N/A	N/A	N/A	N/A	N/A	N/A	N/A
W-101	N/A	N/A	N/A	W-1	N/A	N/A	N/A	N/A
W-508	N/A	N/A	N/A	W-1	N/A	N/A	N/A	N/A
W-510	YES	N/A	N/A	W-1	N/A	YES	FTA-1	YES
W-515D	YES	YES	N/A	W-1	N/A	YES	FTA-1	YES
W-5300	YES	YES	N/A	W-1	N/A	YES	FTA-1	YES
W-715	YES	N/A	N/A	W-1	N/A	N/A	N/A	YES
Z-600I	N/A	N/A	● Z-40	● Z-50	EXT-1	N/A	N/A	N/A
Z-1000I	YES	N/A	● Z-40	● Z-50	EXT-1	YES	FTA-2A	YES
Z-1020	YES	N/A	● Z-40	● Z-50	EXT-1	N/A	N/A	N/A
Z-1200I	YES	N/A	Z-8	● Z-9	EXT-6	YES	FTA-2A	YES
Z-1500I	YES	N/A	Z-20	● Z-30PRO	EXT-3	YES	FTA-3	YES
Z-3020I	YES	N/A	Z-20	● Z-30PRO	EXT-3	YES	FTA-3	YES
Z-350	YES	N/A	N/A	N/A	EXT-1	N/A	N/A	YES
Z-390	YES	N/A	N/A	● WTR-20	EXT-1	N/A	N/A	YES
Z-1520	YES	N/A	N/A	W-2	N/A	N/A	N/A	YES

Antari
FOG MACHINE

Products are manufactured by Antari Lighting & Effects Ltd. : www.antari.com
For information requests please contact us at : sales@antari.com D08Z20220

